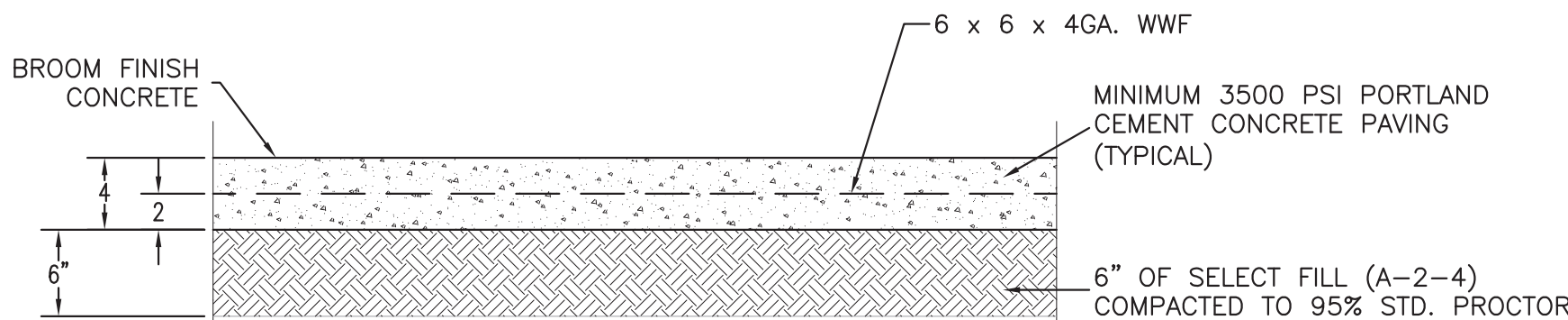
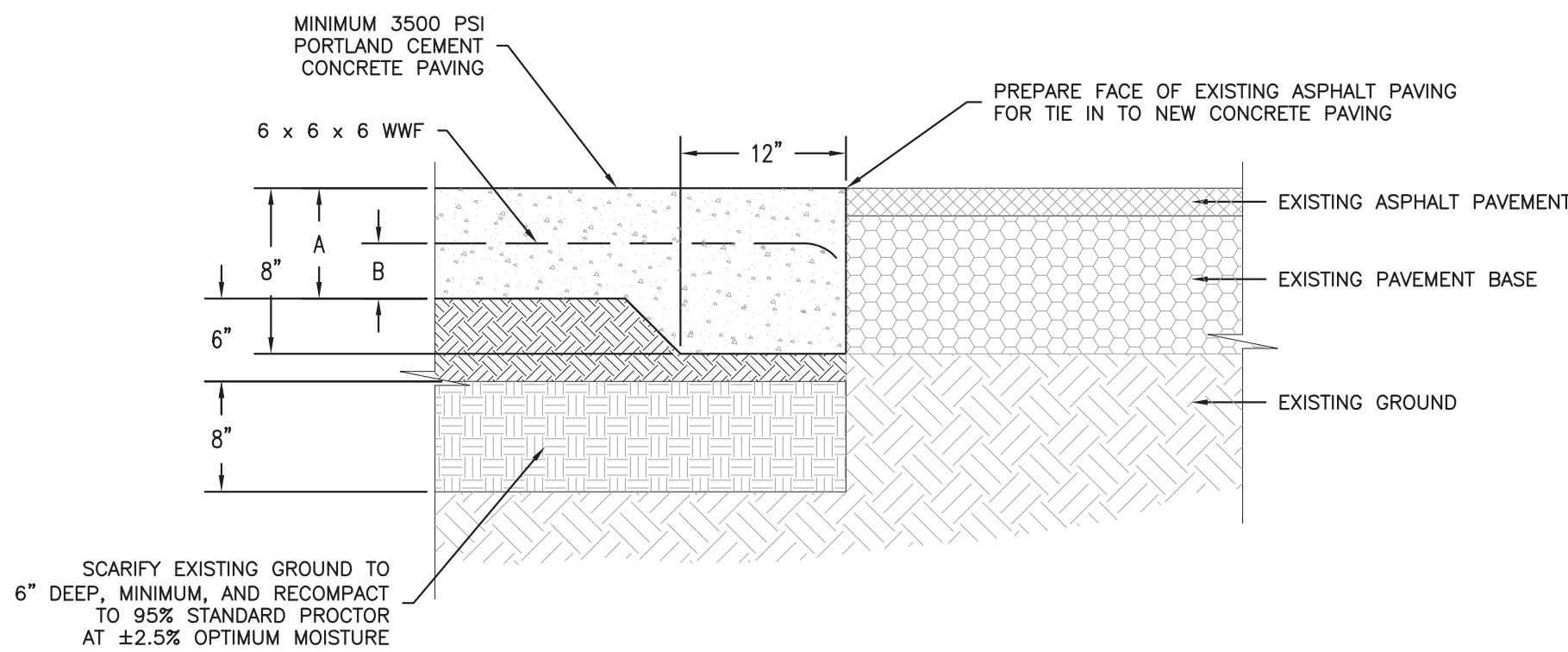


TYPICAL PAVING SECTION



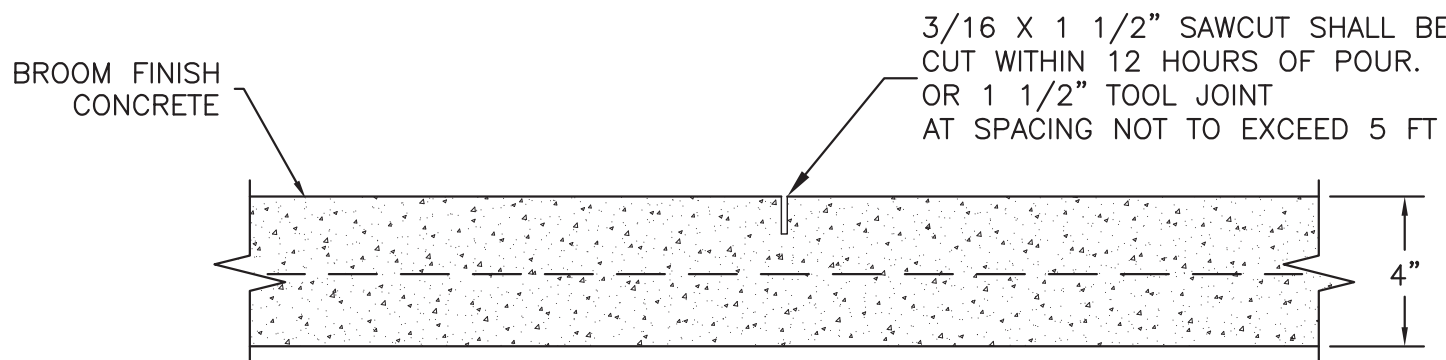
TYPICAL SECTION FOR SIDEWALKS & WALKING TRACK

NOT TO SCALE



CONCRETE TO EXISTING ASPHALT

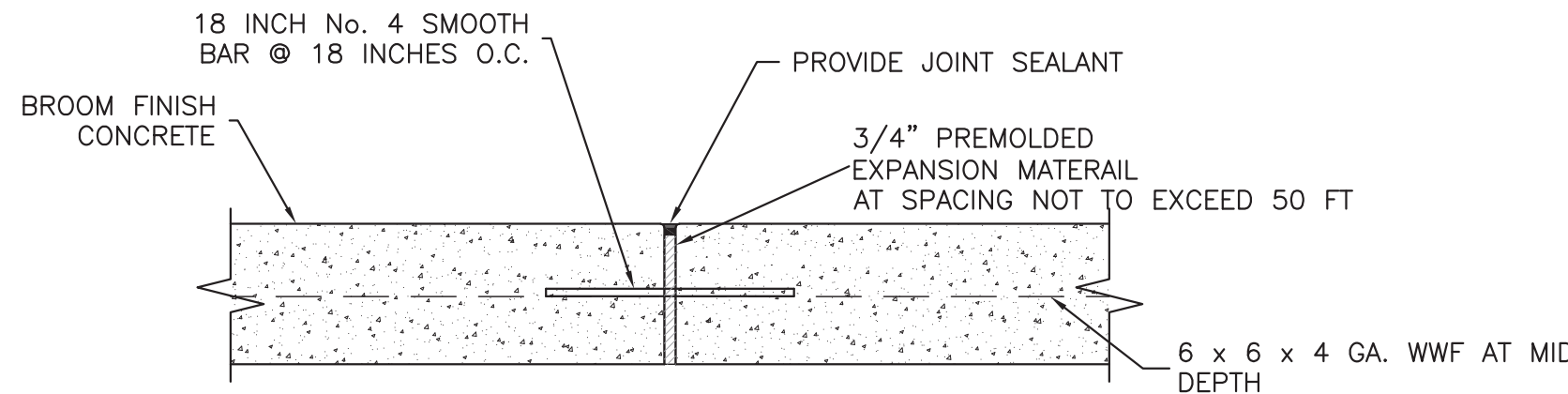
NOT TO SCALE



TYPE - S.J.

SIDEWALK SECTION WITH CONSTRUCTION JOINT

NOT TO SCALE

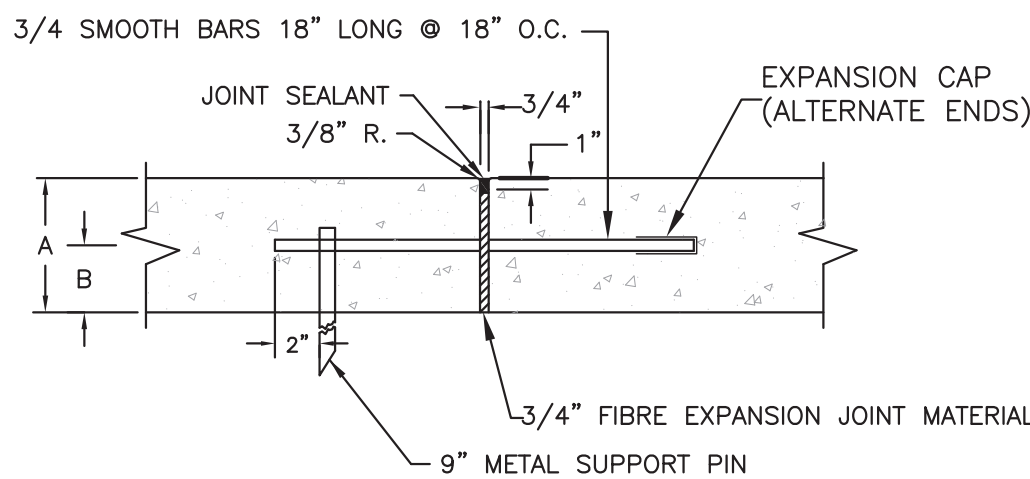


EXPANSION JOINT (TYPE E.J.)

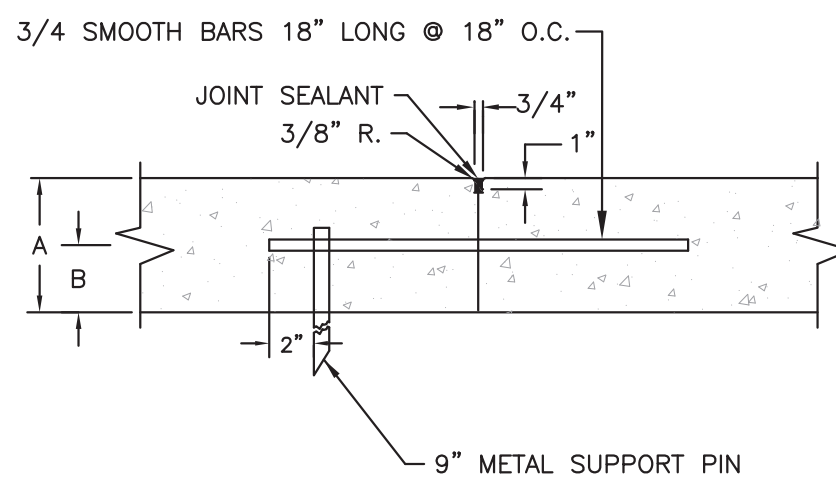
SIDEWALK SECTION WITH EXPANSION JOINT

NOT TO SCALE

CONCRETE SIDEWALK & WALKING TRACK DETAILS
SCALE: N.T.S.



TYPE - E.J.
EXPANSION JOINT



TYPE - D.J.
DUMMY JOINT

TABLE		
	A	B
6" THICK CONCRETE PAVEMENT	6"	3"

PAVEMENT NOTES:

- PAVEMENT EDGES SHALL BE LIGHTLY ROUNDED (1/2" APPRX.).
- REASONABLE TOLERANCE TO ALL DIMENSIONS WILL BE ALLOWED.
- ALL JOINT LOCATIONS TO BE AS INDICATED ON THE CONSTRUCTION PLANS OR AS DIRECTED BY THE ENGINEER.
- ON TYPE E.J. JOINTS PLACE EXPANSION TUBES ON ALTERNATE ENDS OF DOWEL BARS
- DOWEL BARS AND TIE BARS SHALL BE HELD IN PLACE BY SUPPORTS SIMILAR TO THE ONES SHOWN, OR APPROVED EQUALS. APPROVED MECHANICAL PLACEMENT OF DOWEL BARS WILL BE ALLOWED WITH ALL PAVING METHODS. WHEN DOWEL BAR BASKETS ARE USED, SPACER WIRES THAT SPAN ACROSS THE JOINT SHALL BE CUT AND REMOVED AFTER STAKING BASKETS IN PLACE.
- INSTALL FILTER CLOTH UNDER ALL D.J. AND E.J. JOINTS. THE FILTER CLOTH SHALL BE ANCHORED TO THE BASE COURSE WITH SPIKES OR PINS.
- PLASTIC OR EPOXY COATED DOWEL BARS SHALL BE USED. THE DOWEL BARS AND THE PLASTIC COATING SHALL CONFORM TO LADOTD STANDARD SPECIFICATIONS FOR ROADS AND BRIDGES SUB-SECTION 1009.04(a) LATEST EDITION. DOWEL BAR SIZES SHALL BE PER TABLE.
- SEALANT SHALL BE A BITUMEN MODIFIED POLYURETHANE AS SPECIFIED IN LSSRB LATEST EDITION.
- ALL PAVING SHALL BEAR ON A MINIMUM OF 6 INCHES OF COMPACTED SELECT FILL.
- ALL CONCRETE FOR PAVING SHALL BE TYPE B OR TYPE D PER LSSRB TABLE 901-3 LATEST EDITION. CONCRETE FOR SIDEWALKS AND WALKING TRACK SHALL BE TYPE A. CONCRETE SHALL BE CURED IN ACCORDANCE WITH LSSRB.
- ALL CONCRETE PAVING SHALL RECEIVE 6 X 6 X 4 GA. WWF AT THE MID DEPTH. THE CONTRACTOR SHALL PROVIDE SPACERS OR WIRE CHAIRS TO KEEP WIRE AT MID DEPTH.

CONCRETE PAVING DETAILS
SCALE: N.T.S.

1439 Centre Ct., Ste 401
Alexandria, LA 71301
Ph: 318.445.3151
Fx: 318.445.3988
Em: adg@adgllc.net

Fontenot & Associates, LLC
2025 Jackson Street
Alexandria, LA 71301
Office: 318.427.7808
CONSULTANT (IF APPLICABLE)

PHASE 2 - RENOVATIONS TO
CARTER C. RAYMOND
JUNIOR HIGH SCHOOL
2510 SAINT CHARLES AVE, LECOMPTE, LA 71346

SCF
SCF
08:15:25

PROJECT NO:
DRAWN:
CHECKED:
DATE:
LAST REV:

C-110

© 2024, Alliance Design Group, LLC all rights reserved